



Sevenoaks District Community Plan Our Vision for the next 15 years (2013-2028)



Public Consultation Draft

Making it Happen - *together*

Sevenoaks District Community Plan

Our vision for the next 15 years

The Community Plan creates a long-term, sustainable vision for the Sevenoaks District and sets out the community's priorities for action. It reflects what people have told us is important to them.

The current Community Plan will come to an end in April 2013.

We are pleased to present a new vision for the Sevenoaks District for the next 15 years, which is the result of widespread consultation with local people and our partners. The Community Plan is the result of many agencies working together and will be delivered in partnership with those agencies.

We are delighted that 95% of people who responded to our survey supported the existing Community Plan vision and felt it was still relevant. However, we have taken into account the feedback you have given us to make the vision more relevant to the next 15 years.

The Vision:

We want Sevenoaks District to be a place with:

- **Safe Communities:** a safer place to live work and travel
- **Caring Communities:** children are enabled to have the best start and where people can be supported to lead independent and fulfilling lives
- **Green Environment:** people can enjoy clean and high quality urban and rural environments
- **Healthy Environment:** people can have healthy lifestyles, access to quality healthcare and health inequalities are reduced.
- **Dynamic Economy:** a thriving local economy where businesses flourish and people have skills for employment and tourism is supported
- **Sustainable Economy:** people can live, work and travel more easily and are empowered to shape their communities

This vision is supported by an action plan which responds to the priorities for the next three years.

The Community Plan is delivered by the District and County Councils, the health service, the police, the fire service and housing associations together with voluntary groups, businesses and faith communities who are all committed to delivering the vision for Sevenoaks District for the next 15 years set out in this document. Other partners, including Town and Parish Councils, will be closely involved in delivering projects at a local level together with many businesses, community, voluntary and faith groups.

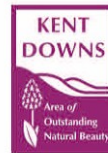
We would like to thank everybody who took the time to give us their views.

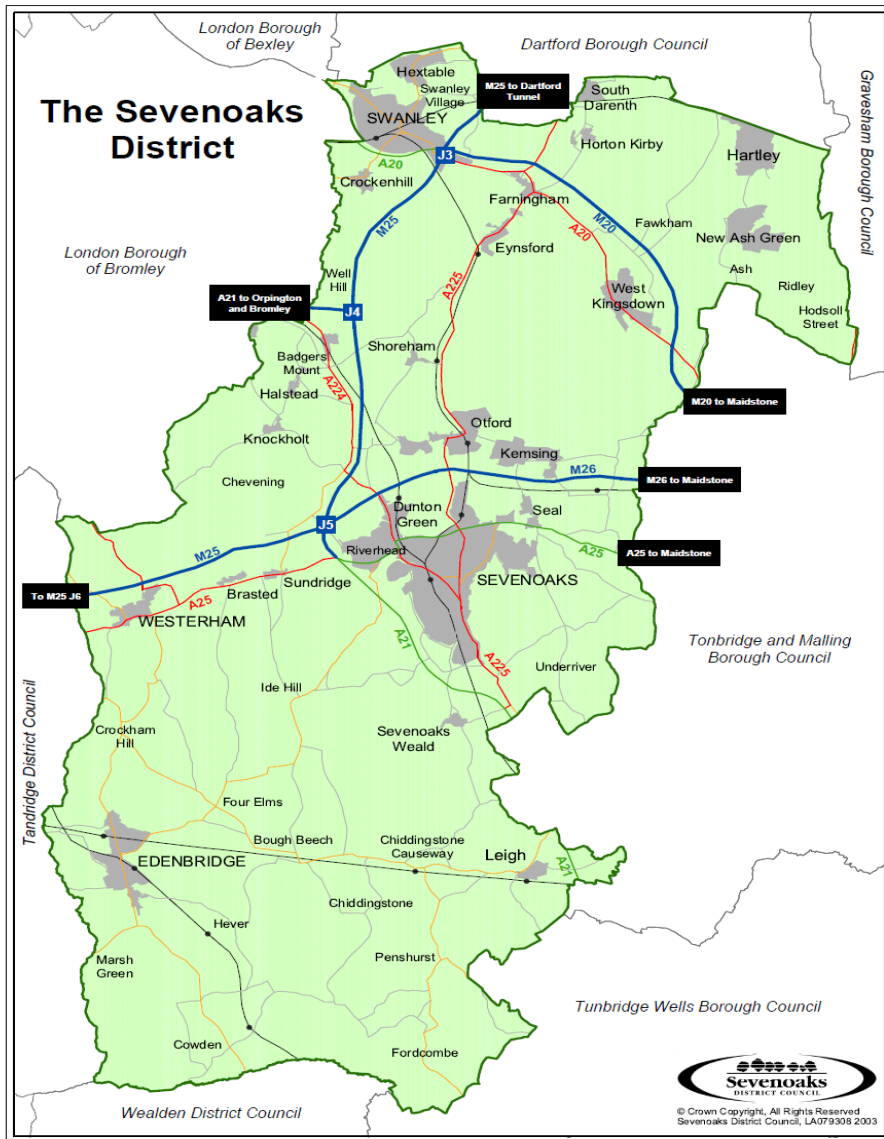
Cllr Peter Fleming
Chairman of the Sevenoaks Locality Board
Leader of Sevenoaks District Council

Our Partners



**Kent Fire &
Rescue Service**





About the Sevenoaks District

Sevenoaks District is located in West Kent. The District covers almost 142 square miles and 93% is designated Green Belt.

With excellent transport links, a skilled workforce, a healthy supply of commercial space, a good quality of life and an eclectic blend of shops, restaurants and historic buildings, Sevenoaks District is a great place to visit, work and do business.

The economy of the District is broad based and has a higher than average level of employment in small businesses and a lower than average level in large businesses compared to the South East average. It is dominated by the service sector with the highest level of employment in wholesale and retail trade followed by business services.

Sevenoaks town is the largest employment centre and is primarily a centre for service industries. Swanley and Edenbridge also have significant concentrations of employment.

London is only a short distance away by train. In addition, the fast Eurostar connection to London and Europe are available at Ebbsfleet is only a few miles outside the District.

With direct access to the M25, M26 and M20, London's primary airports, Kent's seaports and the UK motorway network are all within easy reach. By car Gatwick takes less than 30 minutes and Heathrow around 55 minutes. The District is also well connected to Kent's designated growth areas

The proximity of the District to central London means that there are high levels of commuting, particularly by train. Over 16% of those in employment commute by train to work compared with fewer than 6% in the South East as a whole.

The quality of its landscape is a distinctive feature of the District. The national significance of the landscape is recognised by the inclusion of 60% of the District within either the Kent Downs (to the North) or High Weald (to the South) Areas of Outstanding Natural Beauty.

An overall impression of affluence masks local pockets of urban and rural deprivation. There are six areas in the District more deprived than the national average. Some wards in the District suffer from higher than national average unemployment rates, higher levels of poverty, poor health, low educational and skill levels and higher than average rates of crime.

The age profile of the District's population is slightly older than the South East average and the trend towards an ageing population is set to continue in the future.

The District is distinguished by relatively high levels of home ownership. These factors, together with the proximity of London, have an impact on the affordability of housing. Average house prices in the District exceed both the County and South East averages. The District also has one of the sparsest populations in the County and this is a challenge for local agencies and other service providers.

The District has a strong and vibrant voluntary, community and faith sector, which undertakes a huge and diverse range of services every day. For example, they support those who need extra help, people affected by domestic violence, provide specialist counselling and advice services, help older people to remain independent, empower younger people to take control of their lives and achieve their ambitions, support people with physical health difficulties, disabilities or mental health and difficulties, support people who can't get to their local hospital and don't have access to transport. The District benefits from committed Town and Parish Councils and other groups representing different sectors of our community.

The area is served by 42 Local Authority primary schools as well as Knole Academy, Orchards Academy and Hextable School and a variety of independent schools, 2 community hospitals in Sevenoaks and Edenbridge and 3 Police stations. There is a wide variety of leisure facilities, including leisure centres at Edenbridge, Sevenoaks and Swanley. There are indoor and outdoor bowls centres, golf courses, sports grounds, recreation areas and scenic country walks.

The District also has an important historic and cultural legacy with 17 nationally designated historic parks and gardens including Knole House and Park. Tourism plays a major factor in the District's economic success with internationally recognised attractions, including Chartwell, Hever, Knole and Penshurst Place which benefit the local service sector. There are also 40 Conservation Areas, 2,112 listed buildings and 23 scheduled ancient monuments within the District.

Priorities for the next three years

To help identify priorities for District over the next three years we consulted many different groups, including community representatives, statutory and voluntary organisations, businesses, partnerships and residents.

The following groups have been consulted in the preparation of this document:

- All residents, via the District-wide questionnaire through the Council's "In Shape" magazine.
- Young People at Kent County Council's Youth Advisory Group
- West Kent Ability Group
- Staff engaged in Housing, Planning, Health and Wellbeing, Community Safety, Economic Development and Regeneration and Environmental Health
- Businesses through Business Breakfasts
- Young People, at the Youth Café at the Stag Community Theatre.
- Families in Knockholt, at half-term activities
- Residents at the launch of the White Oak Charter in Swanley
- Families in Eynsford at half-term activities
- Residents in Edenbridge, Sevenoaks, New Ash Green and Swanley
- Sevenoaks Voluntary Sector Forum
- Older People at Hollybush Court Day Centre

- Sevenoaks Kent Locality Board (Sevenoaks District Council and Kent County Council Members)
- Sevenoaks District Council Members
- Town and Parish Councils
- Sevenoaks District Kent Locality Board Housing Sub-Group
- Community Safety Partnership
- Sevenoaks Local Children's Trust Board
- Sevenoaks Health and Wellbeing Board

During our consultations with residents, including more vulnerable people and groups, residents told us that they sometimes need extra support in their lives and extra support to engage in their communities and avoid social exclusion.

For example, support is needed to help families on low incomes, those who find themselves in difficult economic circumstances, and those who want to be supported to be as independent as possible. This can reflect housing and support needs, access to key local services and facilities, access to reliable public transport and access to employment opportunities.

The needs of vulnerable people are taken into account within each part of the Community Plan

Equality and inclusion statement

We recognise that everyone has a contribution to make to our society and a right to access services without being discriminated against or disadvantaged because of their:

- Race, colour, nationality, ethnicity.
- Gender, marital status or caring responsibility.
- Sexual orientation.
- Age.
- Physical or mental disability or mental health.
- Religion or belief.
- Health status.
- Employment status.

Index

Safe Communities	A safer place to live, work and travel	Pages 10-11
Caring Communities	Children have the best start and people are supported to lead independent and fulfilling lives	Pages 12-13
Green Environment	People can enjoy clean and high quality urban and rural environments	Pages 14-15
Healthy Environment	People have healthy lifestyles, access to quality healthcare and health inequalities are reduced.	Pages 16-17
Dynamic Economy	A thriving local economy where businesses flourish and people have skills for employment	Pages 18-19
Sustainable Economy	People can live, work and travel more easily and are empowered to shape their communities	Pages 20-21

This page is left intentionally blank

DRAFT

Safe Communities

Feeling safe in the community and at home is really important. During our consultations local people told us that they want to make Sevenoaks District a safer place to live, work and travel. Reducing speeding vehicles and improving safety for all road users, including pedestrians and cyclists, is also a clear priority.

Residents said that they want local and more visible policing. They value the role of Neighbourhood Police teams as they help them to feel safer and work with communities to help address local concerns. Residents want to continue to develop and improve their relationship with their local Officers.

Sevenoaks District continues to be one of the safest places to live in Kent. However, from our consultations we recognise that residents are concerned about crime and anti-social behaviour, including fly-tipping, intimidation and harassment, noise and criminal damage.

The Sevenoaks District Community Safety Partnership brings together all of the key agencies in the District who have an impact on crime, anti-social behaviour and the perception of crime. Its Community Safety Unit is based at the Sevenoaks District Council offices and responds daily to anti-social behaviour and other community safety priorities in the District.

The Community Safety Partnership recognises that early intervention with some young people helps to reduce crime and anti-social behaviour. They will continue to focus on preventative and diversionary programmes to help those young people most at risk of becoming involved in crime.

However, we must continue to challenge perceptions about young people. Young people can also be the victims of crime, bullying and anti-social behaviour. We will also work with the Partnership on the Government's Troubled Families initiative, which aims to tackle crime, anti-social behaviour, worklessness and persistent school absence.

On 15 November 2012, in the first ever elections, 41 new Police and Crime Commissioners (PCCs) were elected across England and Wales to give local people a say when it comes to cutting crime in their area. PCCs will make and influence key decisions about Community Safety and we are committed to working alongside partners and local people to ensure that the needs of the residents in the Sevenoaks District are identified and represented.

Pictures to go here

We want Sevenoaks District to be a safer place to live work and travel

Priorities for the next three years:

- Safe 1 Facilitate effective working between the Police, Partners and Communities
- Safe 2 Tackle anti-social behaviour and environmental crime
- Safe 3 Deliver a low crime rate in the District
- Safe 4 Support vulnerable and repeat victims of crime and anti-social behaviour
- Safe 5 Tackle speeding vehicles and improve safety for all road users including pedestrians and cyclists.

An Action Plan is shown on page 22

Supports the Vision for Kent –Ambition 2 “To tackle disadvantage”, Ambition 3 “To put citizens in control” and cross cutting theme “Improving Community Safety, crime and anti-social behaviour”

Facts and Figures

- With fewer than 5,000 crimes per year, Sevenoaks District has the second lowest level of all crime in Kent and achieved a reduction of 0.5% in recorded crime in the period September 2011– October 2012 when compared the same period in the previous year.
- Reports of Anti-Social Behaviour to the District’s Anti-Social Behaviour Officer received a total of 217 reports between October 2010 and September 2011. The most common type of reported behaviour is intimidation and harassment, followed by noise and criminal damage.
- The Kent Crime and Victimization Survey (for the period April 2012 – September 2012) showed that 96.4% of people in the District felt safe. This represents a slight improvement compared with the same period in the previous year.
- Theft of Motor Vehicles increased in the period September –October 2012 by 6.3% (13 crimes) when compared to the same period in the previous year. Sevenoaks District has the highest level of Theft of Motor Vehicles in Kent.
- Theft from Motor Vehicles increased in the period September –October 2012 by 7.3% (36 crimes) when compared to the same period in the previous year. Sevenoaks District has the second highest level of Theft from a Motor Vehicle in Kent.
- There are currently 10 PACTs (Partners and Communities Together groups). These groups enable local residents to identify their community safety priorities and work with the Police and other agencies to make improvements. Action plans are updated on a regular basis. Speeding vehicles is the most consistently identified priority for local people

Caring Communities

The Sevenoaks District is seen as a prosperous area, but this can mask poverty, vulnerability, rural isolation all of which can be a barrier to people accessing services and support as well as social and economic opportunities.

Forecasts for the District suggest that the proportion of older people aged 65 and above will significantly increase in the years leading up to 2031. This will have an impact on service planning for health, social care, housing and other services.

During our consultations, local residents felt it was important for older people and vulnerable people to be able to remain in their own homes for as long as possible. We recognise that people need different types of support and help at different times in their lives. The NHS uses “life stages”, to recognise the need to support people to start well, develop well, live well, work well and age well. The new health and wellbeing boards will be well-placed to ensure that health and social care work well together to bring about better outcomes for individuals.

We also recognise that vulnerable people must be supported to be able to sustain tenancies and owner occupation. In order to support people to remain independent, we must provide access to appropriate housing support, care services, benefits and other services and facilities. Working with voluntary sector partners, we can help local people to take greater control of their own finances.

During our consultations, residents also told us that they felt it was important to give children and young people the best possible start in life by starting well and developing well. We want to work with partners and families to provide the right social and emotional support to make sure that children thrive. We will also continue to support improved outcomes for children to make sure children and young people are healthy, stay safe, enjoy and achieve, make a positive contribution and achieve economic well-being.

Pictures to go here

We want Sevenoaks to be a place where children have the best start and where people can be supported to lead independent and fulfilling lives

Priorities for the next three years:

- Caring 1 Enable older people and vulnerable groups to live as independently as possible
- Caring 2 Provide the right support at the right time (including vulnerable groups, people on low incomes and those who care for others)
- Caring 3 Improve outcomes for children and young people
- Caring 4 Reduce poverty and social exclusion

An Action Plan is shown on page 23

Supports the Vision for Kent –Ambition 2 “To tackle disadvantage” and Ambition 3 “To put citizens in control”

Facts and Figures

- The overall impression of affluence in the District masks local pockets of urban and rural deprivation. Six out of the 74 Lower Layer Super Output Areas, the smallest area for which the level of deprivation is measured, are more deprived than the UK average. Five of these areas, including the two worst, are within Swanley and one is in Hartley. (LDF Core Strategy)
- Forecasts show that in the period 2010-2026 we will see a 6,600 or 31% increase in those people who are over 65. The number of people who are over 85 will increase by 1,900 or 62.99%. This is a large increase overall in the retired population of the District and will have a significant knock on effect for the future provision of housing and services
- Over the same period the number of people aged 25-44 will decrease by 3,600 or 13.2%. This is a significant decrease in the working population by 2026. The number of people aged 0-15 will decrease by 1,700 or 7.6%. This indicates a long term change in the population structure of the District (Kent County Council Population Forecasts, Research and Statistics)
- On average throughout the UK, one in five (20.9%) children is classified as below the poverty line (before housing costs). 11% of children in Sevenoaks District are in families on out of work benefits. Both Swanley St Mary’s (34%) and Swanley White Oak (23%) have child poverty levels in excess of the UK average (End Child Poverty)
- In rural areas like Sevenoaks District elderly people can feel isolated due to various barriers to service and inadequate transport links. (Sevenoaks Disadvantage Profile, 2011)

Green Environment

Residents in Sevenoaks District value our environment. They place a high value on the quality of the landscape and want to protect its historic character and the high quality natural and built environment.

This is recognised in the Local Development Framework Core Strategy (adopted in February 2012). The Core Strategy sets out a twenty year spatial vision and strategic planning policy that supports the delivery of the Community Plan. It sets out that new development should be of high quality, respect distinctive local character, incorporate sustainability and take into account potential climate change.

The Government recognises that climate change is happening. We recognise that we need to support local communities in adapting to the effects of climate change. This includes assessing the risks and opportunities for both residents and businesses in the District, including such issues as flood risk, water shortages and frequent summer droughts.

During our consultations, residents also told us they were concerned about saving energy, reducing the use of natural resources and improving air quality. We are committed to leading by example and working with communities to implement measures to reduce the impact of climate change and reduce our carbon footprint. We will also help vulnerable groups who find it difficult to afford to heat their homes due to the rising costs of essential utilities.

Residents have told us that they also wanted to protect open spaces in the District, spaces where we can enjoy the green environment and green infrastructure, spaces for children to play and for people to enjoy sports. Green Infrastructure performs a variety of functions including the conservation and enhancement of biodiversity as well as providing space for informal and formal recreation. The Local Development Framework Open Space Strategy recognises the important of preserving and enhancing open space for the enjoyment of all.

Residents are also concerned about keeping the District looking clean. Cleanliness of the local environment can affect people's perception of the local community and quality of life. It also has an impact on how safe we feel in our communities and this is recognised within the Safe theme of the Community Plan on pages 10-11. Residents also told us that they value and want to keep the weekly refuse collection.

Pictures to go here

We want Sevenoaks District to be a place where people can enjoy clean and high quality urban and rural environments

Priorities for the next three years:

- Green 1 Maintain the extent of the green belt, and conserve and enhance the value of our countryside and green spaces, particularly areas of Outstanding Natural Beauty.
- Green 2 Ensure new development is designed to a high quality and takes into account local character
- Green 3 Reduce energy use and pollution preserve our resources and mitigate the impact of climate change
- Green 4 Maintain a clean local environment

An Action Plan is shown on page 24

Supports the Vision for Kent – Cross Cutting theme “Protecting and Enhancing the Environment” and Ambition 2 “To tackle disadvantage”

Facts and figures

- The total energy consumption in Sevenoaks District is above the average for local authorities in Britain. The per capita energy consumption in Sevenoaks District is 18% more than the South East average, 8% more than the Kent average and 10% more than the national average. The Code for Sustainable Homes and the BREEAM standards require mandatory energy reduction measures in new developments. (LDF Core Strategy)
- The Energy Act 2011 creates a “Green Deal”. This is a new way to enable fixed improvements to the energy efficiency of households and non-domestic properties, which will be refunded by a charge on energy bills that avoids the need for consumers to pay upfront costs (Department of Energy and Climate Change)
- Poor air quality is an issue in certain parts of the District along main roads. Eleven Air Quality Management Areas have been declared and the Council has an Air Quality Action Plan (2009) that includes measures to improve air quality. Road traffic is the main contributor to poor air quality and the level of traffic, particularly through traffic is largely outside the control of the District (LDF Core Strategy)
- Parts of the District are liable to flood. Historically, flooding has occurred within the catchments of the Rivers Darent and Eden. Areas with a high probability of flood risk (1 in 100 year event) are identified in and around Edenbridge, to the north of Sevenoaks, and along the Darent Valley. There are also other areas which are at risk of more localised flooding. (LDF Core Strategy)

Healthy Environment

The Social Care Bill, from 2013-14, makes big changes to the way the NHS works. It increases GPs' powers to commission services on behalf of their patients. Sevenoaks District will be covered by two Health and Wellbeing Boards which bring together GPs, local NHS commissioners, elected representatives and a range of partners who will work together to improve health and wellbeing of people in the Sevenoaks District.

They will focus on the following five key outcomes for health: every child has the best start in life, people are taking greater responsibility with health and wellbeing; the quality of life for people with long-term conditions is enhanced and they have access to good quality care and support; people with mental ill health are supported to live well and people with dementia are assessed and treated earlier.

They are based on the principles set out in the "Kent Health Inequalities action plan - Mind the Gap, Building Bridges to better Health". This builds on the findings of the Marmot review published in "The Strategic Review of Health Inequalities - Fair Society, Healthier Lives" where Marmott sets out that "Health inequalities result from social inequalities".

Healthier lifestyles help to prevent serious or life threatening illness and provide a sense of wellbeing. However, not all groups have equal access to services, facilities and opportunities. The rural nature of the District presents problems in accessing services due to the lack of rural transport services.

Pictures to go here

From our consultations, we know that transport to local health facilities is an issue for many people who do not drive. Residents were concerned to make sure that the health needs of children and young people were taken into account and that we improve access to health advice and information including advice about drug and alcohol misuse. It is also important, to maintain access to the District's leisure facilities, open spaces and to the countryside and to continue to provide healthy lifestyles activities.

We are also aware of the challenges we face of planning the health and social care needs for an ageing population because people are living longer. In addition, we know that both diabetes and dementia are on the increase over the next 15 years. These issues will have an impact on the provision of health and social care services and facilities.

We want Sevenoaks District to be a place where people have healthy lifestyles and where health inequalities are reduced.

From our consultations, it is clear that residents and partners wanted to maximise the benefits to the District from the legacy of the Olympic and London 2012 Paralympic Games. We want to work with local communities to build on the success of these events to increase cycling, physical activity and sport participation in the area. We also want to promote inclusive activity and awareness of disability.

Priorities for the next 3 years

- Healthy 1 Reduce health inequalities and improve health and wellbeing for all
- Healthy 2 Improve access to health services
- Healthy 3 Reduce risk taking behaviour that affects health and wellbeing
- Healthy 4 Create a legacy for the Olympics and Paralympics

An action plan is shown on page 25

Supports the Vision for Kent – Ambition 2 “To tackle disadvantage” and Ambition 3 “To put citizens in control”

Facts and Figures

- There is a difference in life expectancy between different wards in the District. For example, men in more deprived areas have 4.5 years shorter life expectancy than those from less deprived areas.
- Sevenoaks District has the second highest prevalence of type 2 diabetes in West Kent and the number of those with Type 2 Diabetes is expected to rise over the next 15 years. Type 2 Diabetes can cause serious health complications including heart disease, kidney problems, blindness and in extreme cases even amputation (Sevenoaks Disadvantage Profile, 2011)
- 7,834 people in West Kent are currently estimated to have late onset dementia. By 2023, 11,692 people (+50 %) are likely to have late onset dementia. 178 people are currently estimated to have early onset dementia in West Kent. The number of people who have early onset dementia is projected to increase to 203 (+14 %) by 2023. (Dementia Joint Strategic Need Assessment – West Kent)
- The following information is taken from the 2012 Health Profile for Sevenoaks District (Department of Health)
 - About 16.1% of year 6 children in the District are classified as obese, which is lower than the average for UK.
 - An estimated 18% of adults smoke (compared to an average of 20.7% for the UK) and 23.9% are obese (compared to an average of 24.2 for the UK)
 - The rate of increasing and higher risk drinking in the District is higher than the UK average (23.7% compared to 22.3% nationally)



We want to make Sevenoaks District a place with a thriving local economy, where businesses flourish and people have skills for employment

Dynamic Economy

We recognise that a lot of what we want to achieve in our District over the next 15 years depends on having a thriving local economy where businesses can flourish. We wish to encourage the growth of existing businesses and the start up of new businesses. We also want to highlight the benefits to businesses of locating within the District.

Sevenoaks District is home to approximately 6,355 VAT registered enterprises, with the vast majority of those being small and medium sized enterprises. We have a strong rural economy with one of the highest levels of homeworkers, home businesses and self-employed people in the county. Businesses in the District benefit from a transport infrastructure, which is amongst the best of anywhere in the south of England. London is only a short distance away from Sevenoaks or Swanley by rail and the fast Eurostar connections to London and Europe are available at Ebbsfleet, only a few miles outside the District.

During our consultations businesses identified the following priorities:

- Enable local people to have the right skills and training to take up work opportunities
- Create places for people to stay in the District, continue to support tourism, the rural economy and rural diversification.
- Support business growth and development, start-up and home working.
- Improve access to fast and reliable broadband, particularly in rural areas
- Town and village centres to remain vibrant. Some areas in the District need extra help, particularly Swanley and New Ash Green
- Support transport infrastructure for businesses and improve transport within the District
- Protect employment land for the future business needs of the District.
- Provide advice and information to business and help them to access financial support

We will work to create an environment where business can flourish and take advantage of the support and initiatives that are open to them. The Local Development Framework sets out the strategic planning policy that supports the Community Plan. This recognises the importance of supporting business needs in the District and will help to achieve the objectives set out in this plan.

Priorities for the next three years:

Dynamic 1 Protect employment land

Dynamic 2 Improve skills for employability

Dynamic 3 Retain existing businesses and encourage new businesses

Dynamic 4 Improve broadband connectivity

Dynamic 5 Improve energy efficiency

An Action Plan is shown on page 26

Supports the Vision for Kent Ambition 1 – “To grow the economy” and Ambition 2 “To tackle disadvantage”

Facts and Figures

- GVA is the value of goods and services produced in the Districts economy and used to measure the overall economic wellbeing of an area. GVA in Sevenoaks (15,824) is the lowest in West Kent and lower than the County average (17,138) KCC’s Research and Evaluation’s district and county.
- The three largest employment sectors in the District are; construction professional, scientific and technical; business admin and support services (ONS UK Business Survey)
- The total value of tourism to the economy in 2011 was £178,453,000, representing a 2.7% increase from 2009. It also support 4279 jobs and generated a total of 290,000 visitors, of which 47,000 were overseas visitors (Cambridge Model tourism impact statistics 2011)
- District has a higher proportion of individuals with NVQ4 and NVQ 3 and above equivalent qualifications compared to the South East (41.9% in Sevenoaks District compared to 36.2% in the South East and 32.9% in Great Britain). The District has a higher proportion of individuals with NVQ3 and above equivalent qualifications (62.7% in Sevenoaks compared to 56.7% in the South East and 52.7% in Great Britain).
- The proportion of individuals in Sevenoaks District with no qualifications is higher than for South East as a whole, but lower than Great Britain (11.1% in Sevenoaks District compared to 9.1% in the South East and 12.3% in Great Britain).
- Unemployment in Sevenoaks District is below the County average (3.3%), (Kent County Council) In the year April 2011 – March 2012
- While there was a net loss of 95 sq. m employment floor space in the main settlements in the District (Sevenoaks Urban area, Swanley and Edenbridge), there was a net increase of 3250 sq. m in employment floor space across the rest of the District.

Sustainable Economy

The District's proximity to London means that there are high levels of commuting from the District, especially by train. However, we know from our consultations that residents find travelling within the District difficult, particularly for those without cars. The need for better and more sustainable transport is a significant priority.

During our consultations, local residents said that they wanted to be able to walk and cycle more safely. We will promote public and community transport options to reduce pressure on parking and congestion and enable people to access key local services and facilities more easily.

Residents were concerned about the lack of affordable homes. They also felt strongly that there should be a greater choice of local housing retirement and down-sizing opportunities. This should include private options. With a growing older population, the District's housing requirements will change considerably in the next 15 years. Sevenoaks District has the highest average house prices in Kent and people find it very difficult to afford to buy homes. We aim to ensure that there is access to affordable, decent homes for all, by providing the right mix of different housing types and small homes in new developments and taking the needs of vulnerable groups into account. Our new homes need to be sustainable, that is fit for the future in being able to adapt to changing needs, reduce energy consumption and built using sustainable standards of construction. We must also take into account the accommodation needs of the Gypsy and Traveller communities in the District.

Pictures to go here

We recognise that there is a strong history of volunteering in the District. There are many voluntary, community and faith groups operating in the District. They make our communities vibrant and play an active role in bringing different parts of our community together. They also provide an invaluable range of essential services and facilities to people who need support, including those who care for people who need special support. We want to support and encourage strong and active communities by encouraging volunteering and providing support and help for people who volunteer and care for others.

We will support local communities wishing to shape their own communities through Neighbourhood and Parish Plans. We also want to work in partnership with local communities, neighbourhoods and residents to ensure that we are delivering services that people want, that residents' views are known and that we listen and respond.

We want Sevenoaks District to be a place where people can live, work and travel more easily and are empowered to shape their communities

We will also help protect and promote the use of the District's wealth of community buildings and facilities, including sports and leisure centres, village halls, playing fields, outdoor gyms etc.

We will also make sure that developers consider the need for new or improved community facilities as part of any new development. These enable a variety of voluntary and community activities to take place.

Priorities for the next three years:

Sustainable 1	Reduce the need to travel, and promote and improve access to public and community transport
Sustainable 2 local	Improve access to key services
Sustainable 3	Provide the right mix of housing types and smaller homes for older people and meet the needs identified for Gypsies and Travellers in the Local Development Framework
Sustainable 4	Work with local communities to deliver strong, active and sustainable communities

An Action Plan is shown on page 27

Supports the Vision for Kent – Ambition 1 “To Grow the Economy”, Ambition 2 “To tackle disadvantage” and Ambition 3 “To put citizens in control”

Facts and figures

- Sevenoaks has seen the lowest population growth of all Kent districts. Between 2001 and 2011 Sevenoaks’ population increased by 5,584 people, which is equivalent to a 5.1% increase. (2011 Census)
- The District’s commitment to volunteering and strong and active communities was highlighted by the number of volunteers involved in the Olympic Torch Relay and the London 2012 Paralympic Road Cycling at Brands Hatch. Over 280 volunteers were recruited and trained.
- There was an 88% increase in the average house price in Sevenoaks between 2001 and 2011. The average house price in 2011 was £401,975 and the average (median) earnings were £22,703. (Home Truths, National Housing Federation)
- The Council is forecast to have healthy housing land supply which shows that it can meet its housing targets up to 2026. (LDF Core Strategy)
- Kent County Council’s “Growth Without Gridlock” identifies the following key transport challenges for Sevenoaks:
 - Achieving a rebalancing of the transport network in favour of non-car modes as a means of access to services and facilities.
 - Working towards an improved and integrated network of public transport services in and between both urban and rural areas.
- The Gypsy, Traveller and Travelling Show People Accommodate Pitch need assessment (2012) estimated there are at least 498 local gypsies, travellers and travelling show people living in the District. The study estimates the need for an additional 72 pitches/plots for gypsies and travellers over the period 2012-2026.

Safe Communities

Priorities for the next 15 years

Safe 1
Facilitate effective working between the Police, Partners and Communities

Safe 2
Tackle anti-social behaviour and environmental crime

Safe 3
Deliver a low crime rate in the District

Safe 4
Support vulnerable and repeat victims of crime and anti-social behaviour

Safe 5
Tackle speeding vehicles and improve safety for all road users, including pedestrians and cyclists

Actions for the next three years delivered through:



Sevenoaks District Community Safety Partnership



Sevenoaks District Troubled Families Project Board



Sevenoaks Economic Development Action Plan



Sevenoaks District LCTB



Sevenoaks District Health Action Team

S1.1 Consult with and involve local communities in community safety or crime issues that affect them

S1.2 Ensure the visibility of Neighbourhood Police in their local communities

S1.3 Improve communication between PCSOs, Police and local communities

S2.1 Tackle anti-social behaviour, noise and intimidation and harassment

S2.2 Divert children and young people away from crime and anti-social behaviour

S2.3
Maintain cleanliness standards and seek to remove incidents of fly tipping as soon as possible including fly tipping on land where partners are responsible

S2.4 Improve outcomes for families with crime and anti-social behaviour, absence and worklessness through the Troubled Families Programme

S2.5 Work with communities to reduce litter and dog fouling as a concern

S.3.1 Reduce all recorded crime in line with annual targets

S3.2 Review Community Safety Priorities on an annual basis and develop action plans to target crime issues and crime hotspots

S3.3 Work with businesses to reduce business crime

S4.1 Help children and young people to feel safe from bullying at home and at school and safe on the internet

S4.2 Reduce repeat incidents of Domestic abuse

S4.3 Improve information available to local communities about services and facilities available for victims of crime and anti-social behaviour

S 4.4 Reduce incidents of bullying of people with learning and other disabilities

S5.1 Target initiatives to reduce speeding vehicles

S5.2 Improve safety for cyclists and pedestrians on roads in the Sevenoaks District managed by Kent County Council

S5.3 Maintain pavements and repair street lights to improve the safety of pedestrians and improve access for people with disabilities

Caring Communities

Priorities for the next 15 years

Actions for the next three years



Sevenoaks District Troubled Families Project Board



Sevenoaks District LCTB



Local Development Framework Core Strategy (Adopted February 2011)

Caring 1
Enable older people and vulnerable groups to live as independently as possible

C1 .1 Enable older people and vulnerable groups to live as independently as possible

C1.2 Provide social care to support people to remain in their own homes where this is possible and appropriate

Links to Caring 2.1

Caring 2
Provide the right support at the right time (including vulnerable groups, people on low incomes and those who care for others)

C2.1 Meet the needs of vulnerable and lower income households through the delivery of the Sevenoaks District Housing Strategy

C2.2 Increase the provision of respite care and support for those who care for others, including particular support for vulnerable carers

C2.2 Increase opportunities for vulnerable groups to access social opportunities

Caring 3
Improve outcomes for children and young people

C 3.1 Give a better start for children through early intervention services for children aged 0-5 and their parents

C 3.2 Commission and monitor the provision of appropriate youth services for the Sevenoaks District

C 3.3 Enable more young people to have their achievements recognised

C 3.4 Support children during transition from Primary to Secondary Schools

C 3.5 Support children and young people through the delivery of the Local Children Trust Board Action Plan

C 3.6 Reduce barriers to achievement and learning

Caring 4
Reduce poverty and social exclusion

C4.1 Provide support, advice and information to residents about debt management and financial awareness

C4.2 Ensure that people are not excluded from accessing advice and information if they have not got access to the internet

C4.3 Support people in accessing benefits and in the transition to universal credit

C4.4 Increase the number of key local services can be accessed within local communities

Links to Caring 1 & 3

Green Environment

Priorities for the next 15 years

Actions for the next three years



Local Development Framework Core Strategy (Adopted February 2011)



Kent Environment Strategy, KCC



Sevenoaks District Council's Balanced Communities Vision



Growth without Gridlock, KCC



Sevenoaks District Health Action Team

Green 1

Maintain the extent of the green belt, and conserve and enhance the value of our countryside and green spaces, particularly Areas of Outstanding Natural Beauty

G1.1 Protect the green belt

G1.2 Protect the District's historic heritage

G1.3 Concentrate new development on existing urban areas with the greatest range of services and facilities

G1.4 Protect and enhance Areas of Outstanding Natural Beauty

G1.5 Improve access to green and open spaces, the countryside and the historic environment

Green 2

Ensure new development is designed to a high quality and takes into account local character

G2.1 Focus new Housing in main Settlements of Sevenoaks, Swanley and Edenbridge

G2.2 Ensure that new development is designed to a high quality and where possible makes a positive contribution to the distinctive character of the area in which it is situated.

Green 3

Reduce energy use and pollution, preserve our resources and mitigate the impact of climate change

G3.1 Ensure new housing development complies with the relevant Code for Sustainable Homes or BREEAM standard

G3.2 Reduce carbon emissions and conserve natural resources

G3.3 Manage the impact of climate change, including assessing the risks and opportunities

G3.4 Develop and deliver and Sevenoaks Climate Local

G3.5 Avoid development in areas likely to flood

G3.6 Support vulnerable groups who find it difficult to heat their homes

G3.7 Ensure new development mitigates and adapts to climate change, minimises energy use, promotes sustainable travel renewable energy

G3.8 Improve and monitoring air quality with Air Quality Management Areas across the District

G3.9 Reduce road congestion and improve traffic flow

Green 4

Maintain a clean local environment

G4.1 Maintain a weekly collection service

G4.2 Promote recycling

Healthy Environment

Priorities for the next three years

Actions for the next three years



Sevenoaks District Health Action Team



Local Development Framework Core Strategy (Adopted February 2011)



Sevenoaks District LCTB



Sevenoaks District Community Safety Partnership

Healthy 1

Reduce health inequalities and improve health and wellbeing for all

H1.1 Work with Health Boards in the District to Support the delivery of key priorities set out in the “Kent Health Inequalities Action Plan”

H1.2 Provide targeted preventative health and wellbeing programmes

H1.3 Support parents, children and adults to maintain a healthy weight

H1.4 Support vulnerable groups to manage long-term mental health conditions

H1.5 Improve early assessment and diagnosis of dementia

H1.6 Reduce the prevalence of Type 2 diabetes

H1.7 Improve information about alcohol and drug support services

H1.8 Support people with mental ill health

H1.9 Roll out the Total Child Pilot to schools to help identify health and wellbeing issues

Healthy 2

Improve access to health services

H2.1 Improve access to GP services and to hospitals, particularly in rural areas

H2.1 Provide support for vulnerable groups to access health services

Healthy 3

Reduce risk taking behaviour that affects health and wellbeing

H3.1 Reduce the prevalence of smoking, particularly in young people

H3.2 Reduce teenage pregnancy and provide targeted support

H3.3 Improve awareness of sexual health and provide targeted support

H3.4 Tackle the harmful effects of alcohol

Healthy 4

Create a legacy for the Olympics and Paralympics

H4.1 Develop and deliver an action plan relating to the “Be Inspired – Get Active” healthy lifestyles legacy programme

H4.2 Increase the number of schools signed up to the “Get Set” official London 2012 Education Programme

Dynamic Economy

Priorities for the next 15 years

Actions for the next three years



Local Development Framework Core Strategy (Adopted February 2011)



Sevenoaks Economic Development Action Plan



Kent Environment Strategy, KCC



Sevenoaks District Troubled Families Project Board

Dynamic 1
Reduce the loss of employment land

D1.1 Allocate land for employment uses and support home and flexible working through live to work units)

D1.2 Retain job opportunities on regenerated and developed employment sites in the main settlements and provide well designed modern premises

D1.3 Monitor changes in retail floor space within the Sevenoaks urban area, Swanley and Edenbridge

D1.4 Encourage vibrant and viable town centres

D1.5 Pursue major development opportunities in Swanley, Fort Halstead, New Ash Green and others

Dynamic 2
Retain existing businesses and encourage new businesses

D 2.1 Support business to grow and develop and business start-up

D 2.3 Publicise opportunities available to business

D 2.4 Produce and deliver an economic development strategy for the District and support the delivery of the West Kent Investment Strategy

D 2.5 Encourage and support tourism, support rural diversification and the rural economy

D 2.6 Consult businesses about issues that affect them involve them

D 2.7 Maximise opportunities from the Green Economy

Dynamic 3
Improve skills for employment

D.3.1 Support 16-18 year olds into employment, education and training

D.3.2 Increase the number of people with the right skills and qualifications for employment

D 3.4 Increase the number of people accessing apprenticeship opportunities

D 3.5 Develop initiatives to improve the retention of graduates in the District

D 3.6 Improve opportunities for employment for disadvantaged and vulnerable groups

D3.7. Develop work readiness programmes for unemployed people and people on benefits

D3.8
Encourage links with further and higher education establishments

Dynamic 4
Improve broadband connectivity

D.4.1 Work to encourage fast and more reliable broadband access for residents and businesses in the District

Dynamic 5
Improve the sustainability of the business economy

D.5.1 Facilitate greater efficiency and effectiveness in the use of resources

D.5.2 Increase resilience through improved contingency planning

Sustainable Economy

Priorities for the next 15 years

Sustainable 1
Reduce the need to travel and promote and improve access to public and community transport

Sustainable 2
Improve access to key local services

Sustainable 3
Provide the right mix of housing types and tenure and smaller homes for older people and meet the accommodation needs of Gypsies and Travellers

Sustainable 4
Work with local communities to deliver strong, active and sustainable communities

Actions for the next three years



Local Development Framework Core Strategy (Adopted February 2011)



Growth without Gridlock, KCC



Sevenoaks District Council's Balanced Communities Vision

Sus1.1 Encourage travel plans in new developments

Sus1.2 Promote the use of community transport to meet particular needs

Sus1.3 Promote existing transport links and work towards improve, more integrated transport

Sus1.4 Encourage sustainable travel in the District

Sus1.5 Implement schemes identified through the Local Transport Plan, Growth without Gridlock and the Sevenoaks District Local Transport Strategy

Sus 2.1 New Residential Development within 30 Minutes of GP, hospital, primary and secondary school and a town centre or local service centre.

Sus 3.1 Seek the provision of affordable housing in all new developments in response to identified local housing needs, assisting those unable to afford suitable homes on the open market.

Sus 3.2 Provide for small scale affordable housing schemes to meet identified local needs in rural areas.

Sus3.3 Include provision for a greater number of older people's housing, housing with mixed tenure and smaller households to meet needs in the District

Sus 3.4 Meet the needs of the District and the requirement for affordable housing as set out in the Housing Needs Survey.

Sus3.5 Continue to provide a supply of ready to develop housing sites to deliver additional homes

Sus3.6 Deliver priorities and schemes identified in the Sevenoaks District Housing Strategy and Action Plan

Sus3.7 Identify sites for extra care and sheltered housing accommodation

Sus3.8 Meet the accommodation needs for Gypsies and Travellers as set out in the LDF Core Strategy and Allocations Development Management Policy

Sus 4.1 Increase participation in regular volunteering and community activities

Sus 4.2 Support the development of Parish and Neighbourhood Plans

Sus 4.3 Ensure residents are consulted about issues that affect them and are involved in the design and planning of services

Sus4.4 Enable local social, community and cultural activities to flourish for all age groups

Glossary

Anti-Social Behaviour (ASBO)

Anti-Social Behaviour Orders are statutory measures that aim to protect the public from behaviour that causes or is likely to cause harassment, alarm or distress. An order contains conditions prohibiting the offender from specific anti-social acts or entering defined areas. For more information please visit www.sevenoaks.gov.uk

AONB

Area of Outstanding Natural Beauty. Two AONBs cover the Sevenoaks District and these are the High Weald AONB (covering much of Sussex and parts of Kent and Surrey) and the Kent Downs AONB (covering a quarter of Kent from the White Cliffs of Dover to the London and Surrey borders). For more information please visit www.kentdowns.org.uk or www.highweald.org

GVA

GVA is the value of goods and services produced in the Districts economy and used to measure the overall economic wellbeing of an area.

HS1

High Speed 1. High Speed 1 is the railway between St Pancras in London and the Channel Tunnel and connects with the international high speed routes between London and Paris, and London and Brussels.
<http://highspeed1.co.uk/Who-we-are>

KCC

Kent County Council. For more information please visit www.kent.gov.uk

LDF

The Local Development Framework forms the “spatial expression” of the Community Plan and therefore contains land use policies that reflect the aims identified in the Community Plan. For more information please visit www.sevenoaks.gov.uk

LCTB

Sevenoaks District Local Children’s Trust Board
http://www.kenttrustweb.org.uk/kct/lctb_sevenoaks.cfm

PACT

Partners and Communities Together is a scheme which enables local communities to work with service providers to identify, prioritise and deal with local community safety issues. For more information please visit www.sevenoaks.gov.uk

PCC

Police and crime commissioners (PCCs) will ensure the policing needs of their communities are met as effectively as possible, bringing communities closer to the police, building confidence in the system and restoring trust. PCCs will make and influence key decisions that will impact on how a local area looks and feels. Their job is to listen to the public and then respond to their needs, bringing more of a public voice to policing and giving the public a name and a face to complain to if they aren't satisfied.
<http://www.homeoffice.gov.uk/police/police-crime-commissioners/public/>

SDC

Sevenoaks District Council

Sevenoaks District Kent Locality Board

Who are we?

The Locality Board consists of 7 Kent County Council Members and 7 Sevenoaks District Council Members. The Board will be chaired by the Leader of Sevenoaks District Council.

The Board is responsible for supporting, steering and scrutinising the work of multi-agency partnerships serving the District.

The Locality Board will set local priorities for action and deliver the countywide ambitions for the locality.

The Community Plan is delivered by the district and county councils, the health service, the police, the fire service and housing associations together with voluntary groups, businesses and faith communities. Together they make up the Locality Board Delivery Group.

What are the countywide ambitions?

The Vision for Kent 2012-2022 is Kent's Sustainable Community Strategy.

It sets out three Countywide Ambitions for Kent

- Ambition 1 - To grow the economy: For Kent to be 'open for business' with a growing and successful economy and jobs for all
- Ambition 2 - To tackle disadvantage : For Kent to be a county of opportunity, where aspiration rather than dependency is supported and quality of life is high for everyone
- Ambition 3 - To put citizens in control: For power and influence to be in the hands of local people so they are able to take responsibility for themselves, their families and their communities

Within this document, we have identified which local priorities support the ambitions set out in the countywide "Vision for Kent"





How to get involved

If you feel that you or your organisation can make a contribution to delivering the key priorities or the priority outcomes please let us know. For more information or a copy of the Community Plan for Sevenoaks District, please contact:

Community Planning and Projects Officer
Sevenoaks District Council
P O Box 182, Argyle Road
Sevenoaks, Kent TN13 1GP

Telephone: 01732 227000

Fax: 01732 742339

Minicom: 01732 227496

Email: community.plan@sevenoaks.gov.uk

Website www.sevenoaks.gov.uk/communityplan

This publication is available in large print. For a copy call 01732 227414

If you need help communicating with us or understanding the document, we can arrange for an interpreter to help you. Please contact us on 01732 227000 stating your language and telephone number.